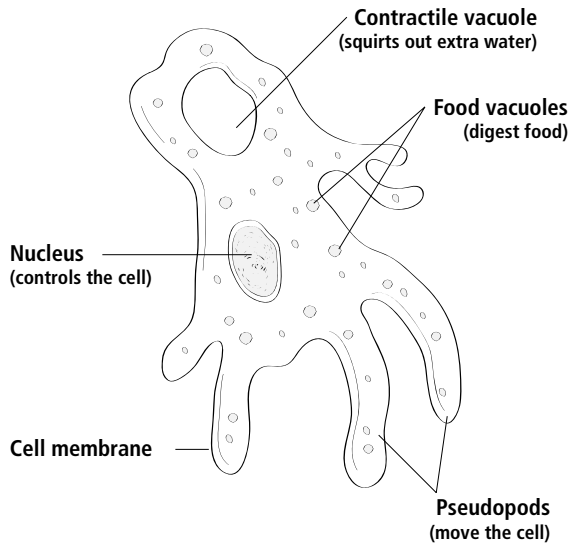


Amoeba



An amoeba is a one-celled protozoan. Look for tiny gray “blobs” on the slide. When you see an amoeba, look for the structures shown in the diagram.



Movement An amoeba moves with pseudopods (“false feet”). It extends a “foot” of cytoplasm in one direction, and the rest of the body flows into that area.

Feeding An amoeba surrounds another live organism with its pseudopods and takes it into a food vacuole.

Reproduction When an amoeba gets too large, it divides in half. The nucleus splits, too.

Size 600 μm (Two amoebas would almost fit in 1 mm.)

Answer the following questions.

❶ Is the amoeba alive? How do you know?

❷ How is an amoeba like an animal?
